

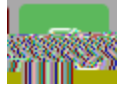
How to Add the Zoom External Tool to Moodle (USE IN CONJUNCTION W/ SCHEDULED MEETINGS IN ZOOM)

Moodle course.

Note: You must have a Zoom account. If you do not have a ULM Zoom account, request one by emailing Greg Andrews at gandrews@ulm.edu and he can get you going.

Once you have successfully logged in to your account, follow the steps below to add the Zoom plugin to your Moodle course.

1. First, **Turn editing on** via the icon at the top left

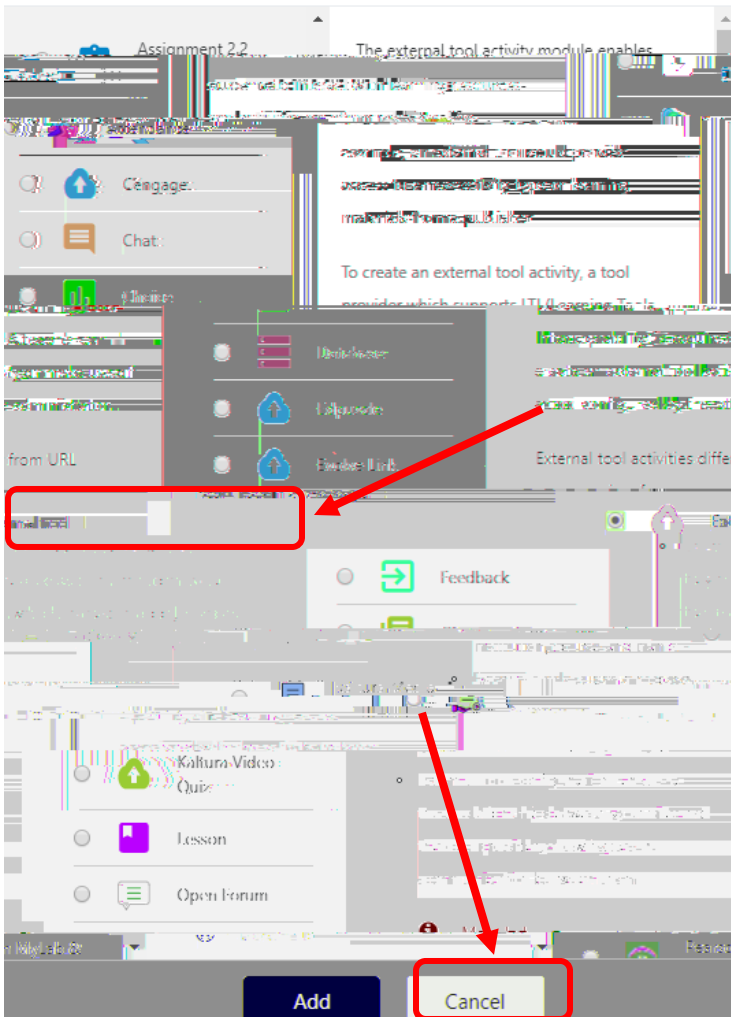


2. Scroll to the section/week you want to add the Zoom tool and click **Add an Activity or resource**.

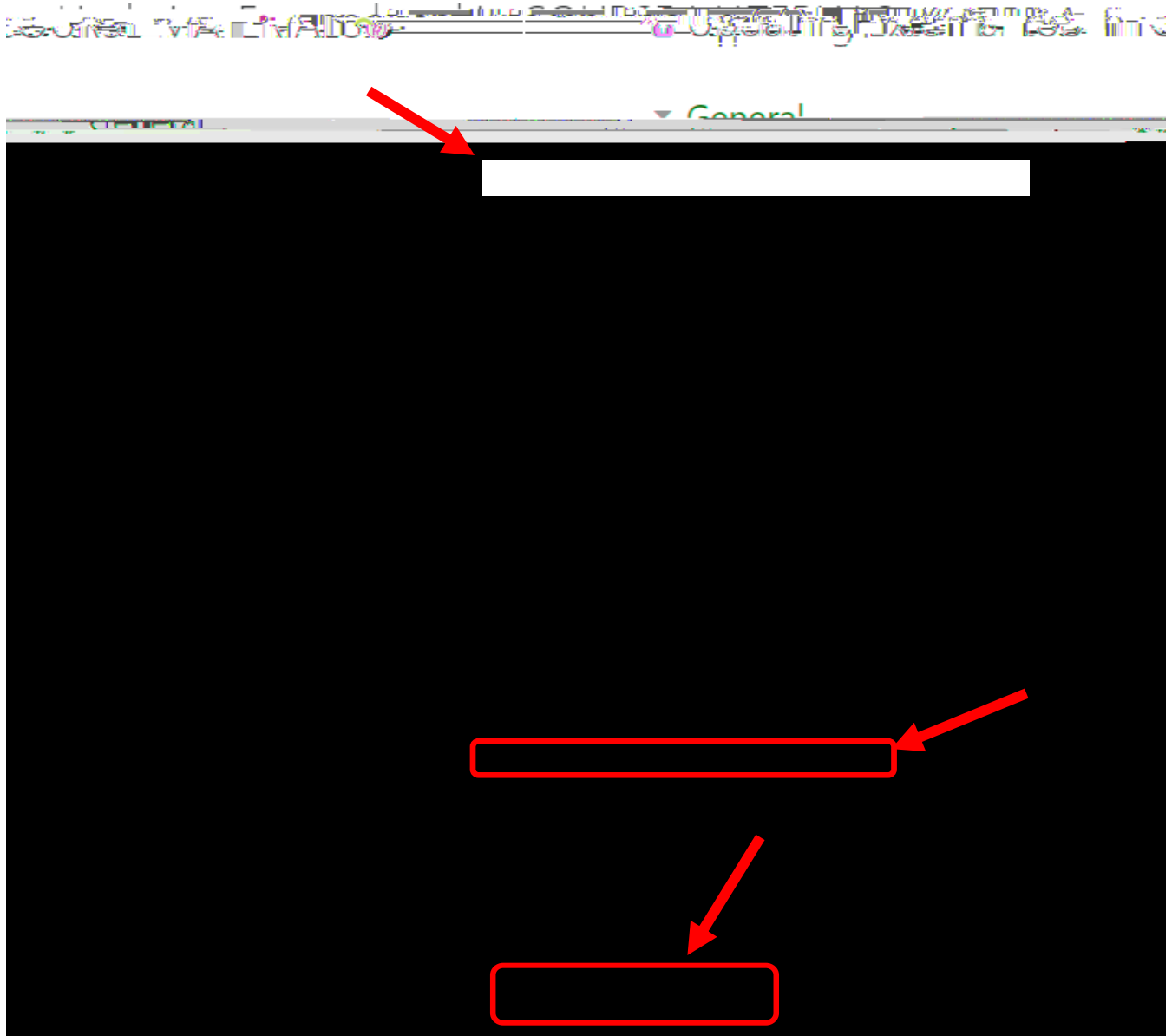
+ Add an activity or resource

3. Select **External Tool** from the pop-up window and click **Add**.

Add an activity or resource



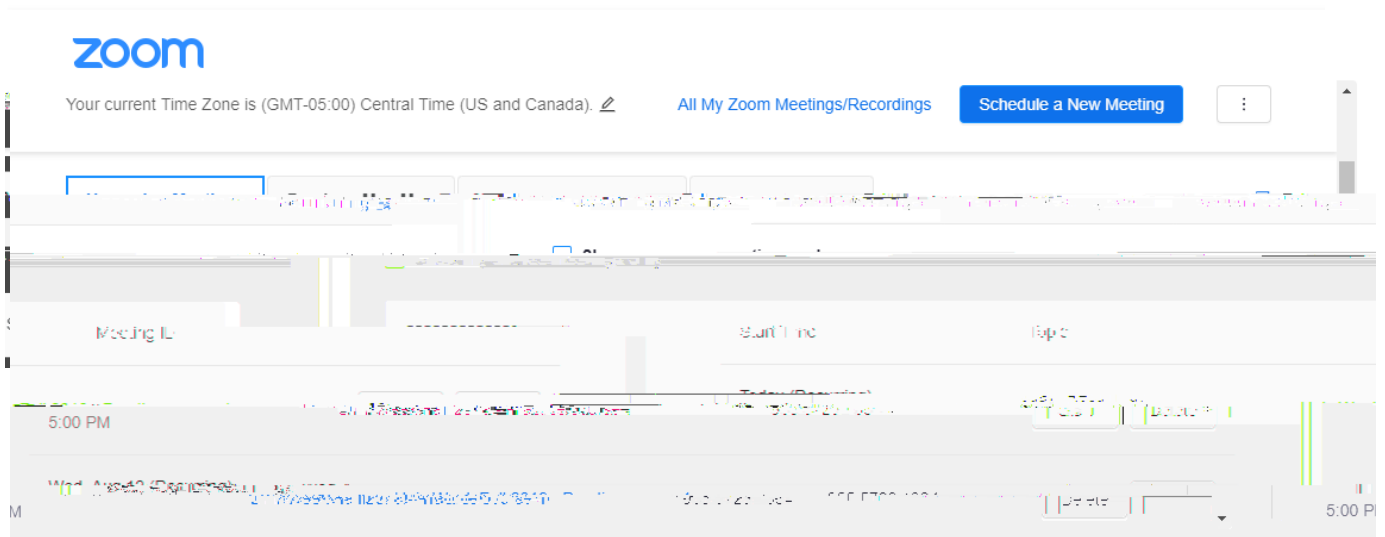
4. On the next page, add an activity name and select Zoom from the preconfigured tool drop down menu.



5. Click Save and return to course.



6. The instructor's view of this tool in Moodle will look like the Zoom Web Portal Scheduler in a Frame like this



The user's view of this tool in Moodle will look like this:

